

ALPHABET TRACING WORKSHEET



L I

Two sets of handwriting practice lines. Each set consists of a solid top line, a dashed middle line, and a solid bottom line, with vertical dashed lines creating columns for letter placement.

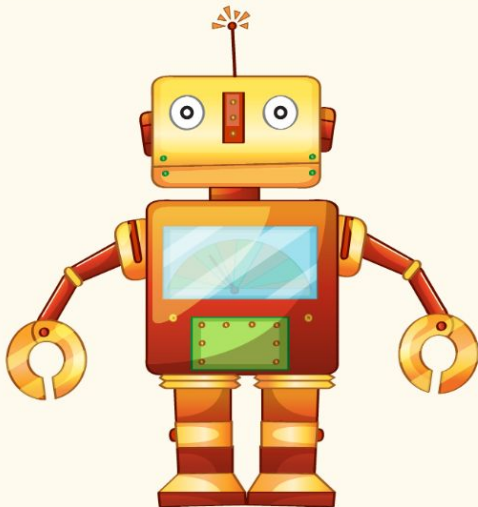
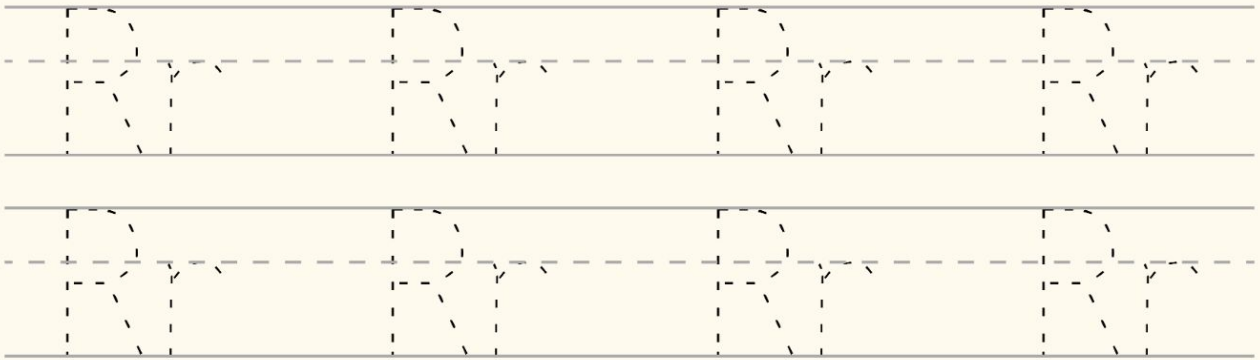


Tracing practice lines for the words 'ladder' and 'lamb'. The words are written in a dashed font on a set of handwriting lines (solid top, dashed middle, solid bottom).

ALPHABET TRACING WORKSHEET



Rr



ALPHABET TRACING WORKSHEET

英語スクール・インターナショナル



SPRING
スプリング



U u

